

## Light efficiency:

**99 Lumen/Watt**

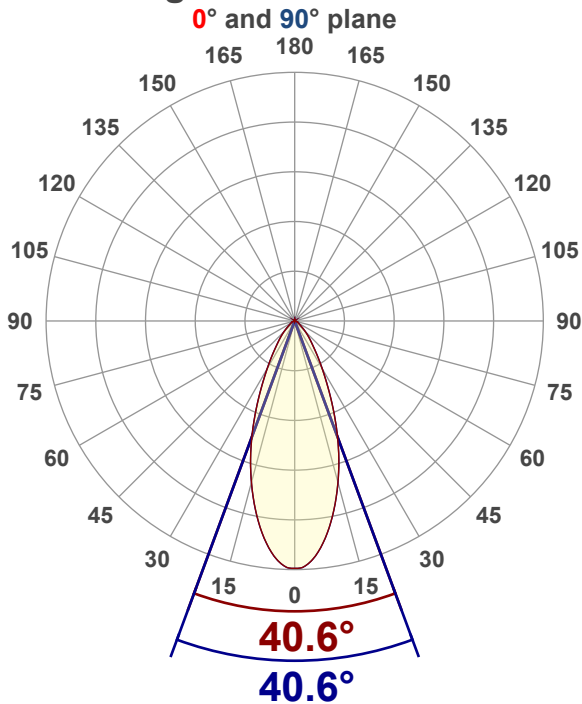
## Color temperature:

**3157 K**

## Light quality:

**CRI:95.7, R<sub>g</sub>:93.5, R<sub>f</sub>:99.3****P: 2 / V: - / F: 2****Output: 660 lm****Peak: 1080 cd****Power: 6.6 W****Voltage: 120 V****Current: 0.059 A****PF: 0.95****THD: 18.42 %**

## Angular Distribution



Product name:

**RA2-7F-90WH - 3000K**

Test Date:

**12/2/2025**

Beam Angle (50% of the brightness of the centre):

**40.6°**

Field Angle (10% of the brightness of the centre):

**78.4°**

Cut Off Angle (2.5% of the brightness of the centre):

**109.3°**

## Beam Details

\*measured at centre of beam

Mounting Height (feet)\(meter)	Lux*	Footcandles*	Beam width (feet) / (meter)
4 ft / 1.2 m	727 lx	68 fc	3 ft / 0.9 m
8 ft / 2.4 m	182 lx	17 fc	5.9 ft / 1.8 m
12 ft / 3.7 m	81 lx	8 fc	8.9 ft / 2.7 m
16 ft / 4.9 m	45 lx	4 fc	11.8 ft / 3.6 m
20 ft / 6.1 m	29 lx	3 fc	14.8 ft / 4.5 m

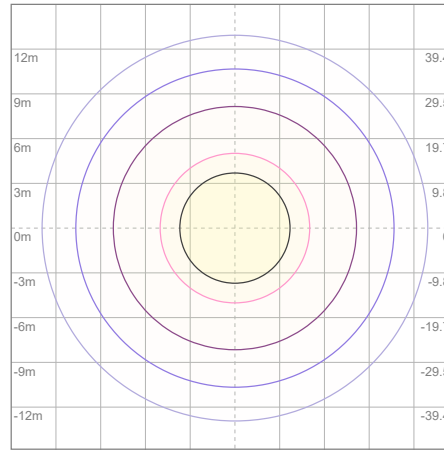
Beam center

# Photometric Testing Report

## Zonal Lumen Summary

Zone	Lumen	%Luminaire
0-30	467	70.76%
0-40	565	85.61%
0-60	641	97.12%
60-90	18.1	2.74%
70-100	6.16	0.93%
90-120	0.129	0.02%
0-90	659	99.85%
90-180	0.445	0.07%
0-180	660	100.00%

## ISO Lux Diagram



Lux at center:	116 lx
3%	3.48 lx
5%	5.80 lx
10%	11.60 lx
30%	34.80 lx
50%	58.00 lx

### Conditions:

Number of planes: 8

Lux distribution on a surface when lamp is mounted at 3.05 meters from the surface.

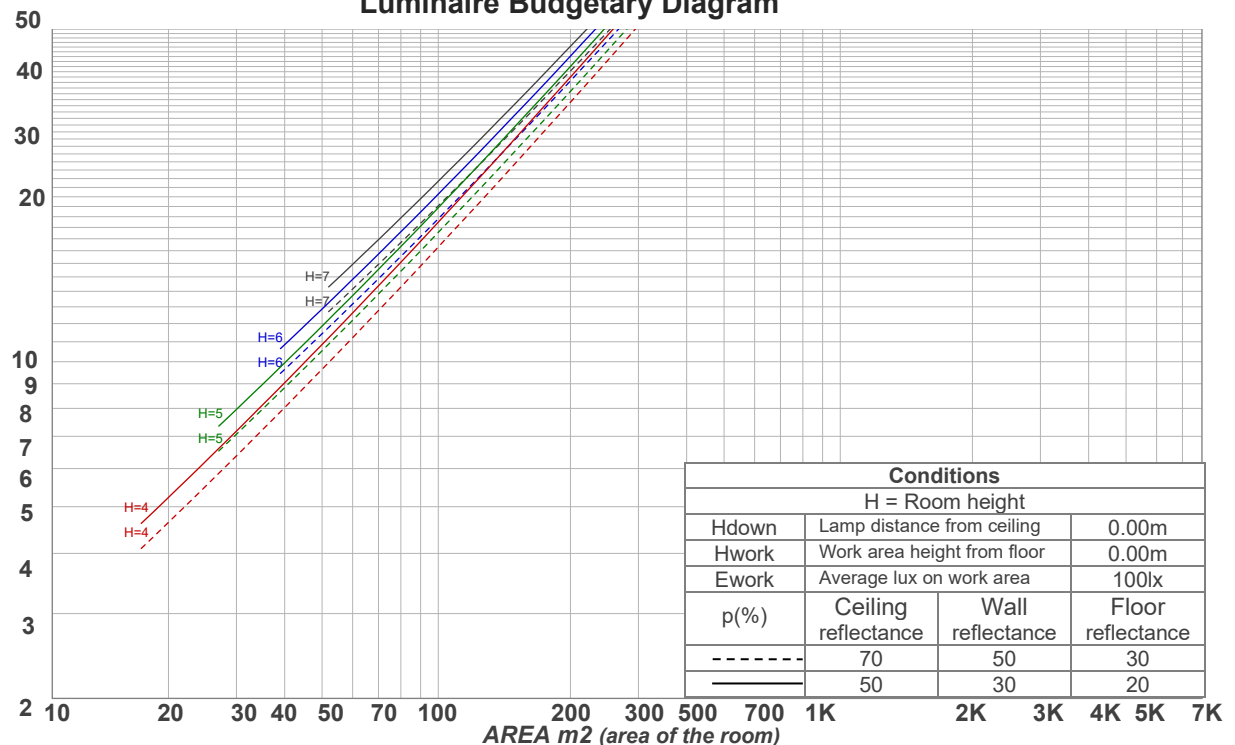
Mounting height: 3.05 meters (10 feet)

## Coefficients of Utilization

Ceiling reflectance	80				70				50			30			10			0
Wall reflectance	70	50	30	10	70	50	30	10	50	30	10	50	30	10	50	30	10	0
Floor reflectance	20	20	20	20	20	20	20	20	20	20	20	20	20	20	20	20	20	0
RCR	(RCR: Room Cavity Ratio) Room Values are expressed as percentage of Lumens delivered to the task surface																	
0	119	119	119	119	116	116	116	116	111	111	111	106	106	106	102	102	102	100
1	113	110	108	105	111	108	106	104	104	102	101	100	99	98	97	96	95	93
2	107	102	98	95	105	101	97	94	97	94	92	94	92	90	92	90	88	86
3	102	95	90	86	100	94	89	85	91	87	84	89	86	83	87	84	81	80
4	97	89	83	79	95	88	83	79	86	81	78	84	80	77	82	79	76	74
5	92	84	78	73	90	83	77	73	81	76	72	79	75	72	78	74	71	70
6	88	79	73	68	86	78	72	68	76	71	68	75	70	67	74	70	67	65
7	83	74	68	64	82	73	68	64	72	67	63	71	66	63	70	66	63	61
8	80	70	64	60	78	70	64	60	69	63	60	67	63	60	67	62	59	58
9	76	67	61	57	75	66	61	57	65	60	57	64	60	56	63	59	56	55
10	73	63	58	54	72	63	57	54	62	57	54	61	57	53	61	56	53	52

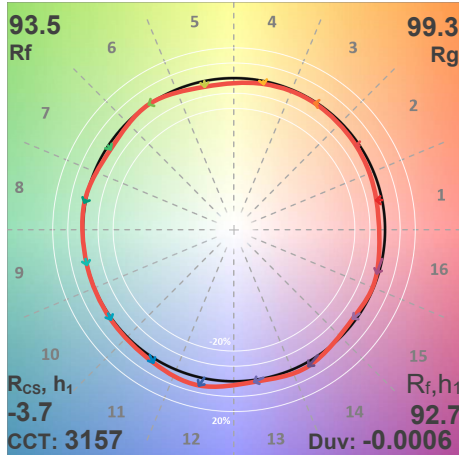
## LAMPS (number of lamps)

## Luminaire Budgetary Diagram

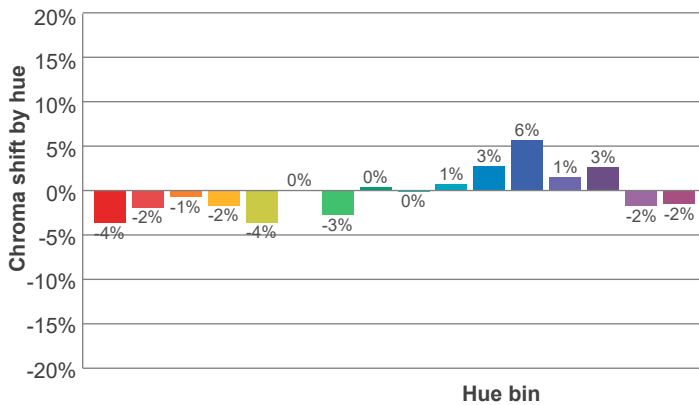
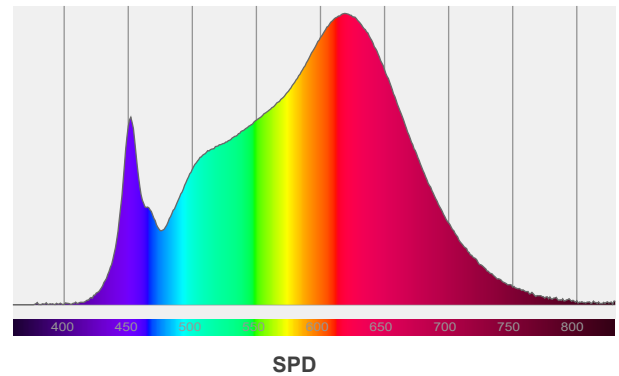
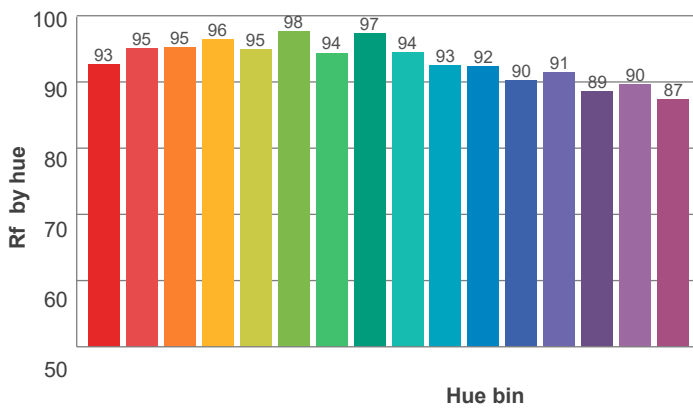
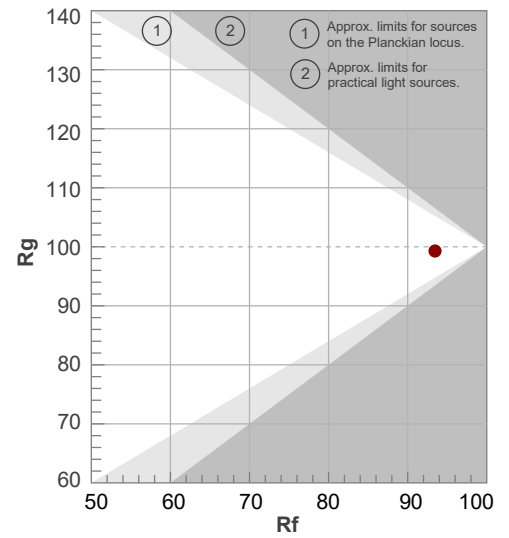


ANSI/IES TM-30-18

P: 2 / V: - / F: 2



Hue Bin	R <sub>f</sub>	Shifts (%)	
		Chroma	Hue
1	93	-4%	1%
2	95	-2%	1%
3	95	-1%	2%
4	96	-2%	-1%
5	95	-4%	0%
6	98	0%	1%
7	94	-3%	1%
8	97	0%	2%
9	94	0%	4%
10	93	1%	4%
11	92	3%	5%
12	90	6%	-2%
13	91	1%	-6%
14	89	3%	-9%
15	90	-2%	-5%
16	87	-2%	-10%



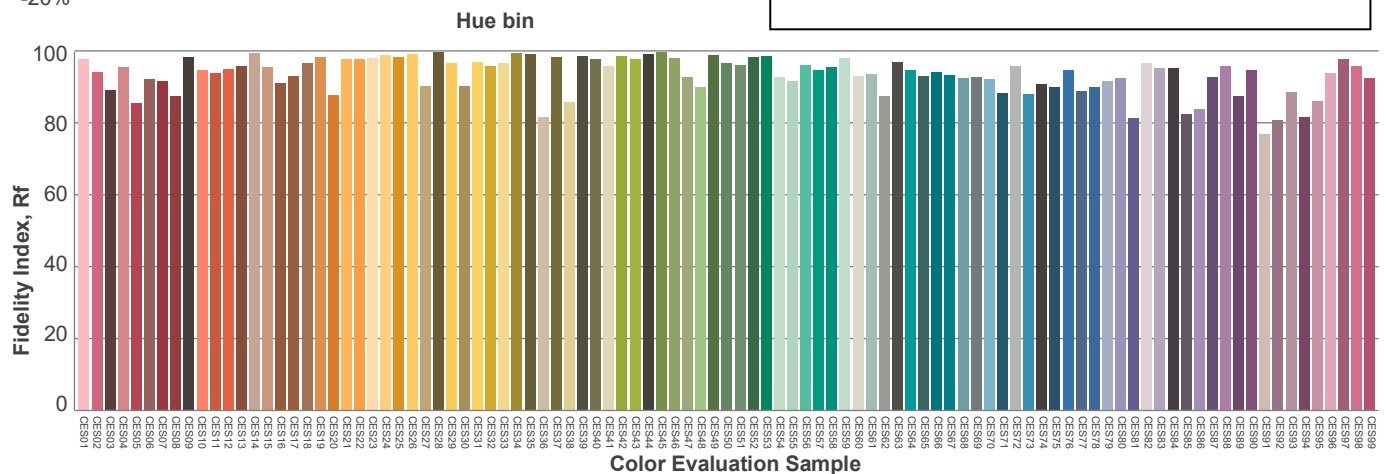
Red: 36%, Power=6.0mW

Blue: 9.9%, Power=3.9mW

Green: 25.5%, Power=7.9mW

UVA: 0%, Power=0.0mW

Dominant Wavelength: 583nm

1<sup>st</sup> Peak Wavelength: 619nm2<sup>nd</sup> Peak Wavelength: 452nm

### Glare Evaluation According to UGR

p Ceiling		70	70	50	50	30	70	70	50	50	30
p Walls		50	30	50	30	30	50	30	50	30	30
p Floor		20	20	20	20	20	20	20	20	20	20
Room size X      Y		Viewing direction at right angles to lamp axis					Viewing direction parallel to lamp axis				
2H	2H	22.5	23.2	22.7	23.4	23.6	22.5	23.2	22.7	23.4	23.6
	3H	22.6	23.4	23.0	23.6	23.8	22.6	23.4	23.0	23.6	23.8
	4H	22.6	23.4	23.0	23.6	23.8	22.6	23.4	23.0	23.6	23.8
	6H	22.7	23.3	23.0	23.6	24.0	22.7	23.3	23.0	23.6	24.0
	8H	22.7	23.3	23.0	23.6	24.0	22.7	23.3	23.0	23.6	24.0
	12H	22.7	23.3	23.0	23.6	24.0	22.7	23.3	23.0	23.6	24.0
4H	2H	22.4	23.2	22.8	23.4	23.7	22.4	23.2	22.8	23.4	23.7
	3H	22.8	23.3	23.1	23.7	24.1	22.8	23.3	23.1	23.7	24.1
	4H	22.8	23.3	23.2	23.8	24.3	22.8	23.3	23.2	23.8	24.3
	6H	22.9	23.4	23.4	23.8	24.1	22.9	23.4	23.4	23.8	24.1
	8H	22.9	23.4	23.4	23.7	24.1	22.9	23.4	23.4	23.7	24.1
	12H	22.9	23.3	23.4	23.7	24.1	22.9	23.3	23.4	23.7	24.1
8H	4H	22.7	23.3	23.3	23.6	24.0	22.7	23.3	23.3	23.6	24.0
	6H	22.9	23.3	23.4	23.7	24.2	22.9	23.3	23.4	23.7	24.2
	8H	23.0	23.3	23.5	23.8	24.4	23.0	23.3	23.5	23.8	24.4
	12H	23.0	23.2	23.6	23.7	24.3	23.0	23.2	23.6	23.7	24.3
12H	4H	22.7	23.1	23.2	23.5	24.0	22.7	23.1	23.2	23.5	24.0
	6H	22.9	23.2	23.4	23.7	24.4	22.9	23.2	23.4	23.7	24.4
	8H	23.0	23.2	23.6	23.7	24.3	23.0	23.2	23.6	23.7	24.3
Variation of the observer position for the luminaire distance S											
S = 1.0H		1.9 / -1.8					1.9 / -1.8				
S = 1.5H		3.7 / -2.6					3.7 / -2.6				
S = 2.0H		5.4 / -3.7					5.4 / -3.7				
Standard table		n/a					n/a				
Correction summand		n/a					n/a				
Corrected glare indices referring to 660 lm total luminous flux											

Due to our continued efforts to improve our products, product specifications are subject to change without notice. Please refer to our website for the latest test results.